



ANNIVERSARY

**GOLF APPAREL BRANDS INC.**

**LA MODE®**



**CLARK & GREGORY**



*Custom Embroidery and Private Label Specialists*



## ANNIVERSARY (1978-2015)

Dear Customers & Friends,

We are proud to have reached 37 Years...where has all the time gone?!

In 1978 it all began. I launched the La Mode golfwear line, a dream of mine that was eventually realized from many years of retail and golf experience. La Mode quickly flourished into a well-known golf brand - leading the apparel side of the industry. Through the years, we have been the exclusive apparel providers for 7 U.S. Open's, hundreds of PGA Tour Events and countless professionals including some of the biggest stars in the game. We also have cherished the more personable events/accounts that we work with which have included thousands of member-guests, invitational tournaments, team uniforms, corporate outings, tee gifts and more!

We have compiled a timeline of our historic events to share with you!

- 1989 - We moved into our 100,000+ sq. ft. office, embroidery facility and warehouse (LA)
- 1990's - Owned U.S. License for Lyle and Scott Brand, sponsored Lee Westwood
- 1992 - We launched the wildly successful Fairway Blues brand with tour sensation and friend Phil Mickelson
- 1999 - We bought 'Clark&Gregory' and moved the company from Michigan to California
- 2002 - Renamed, 'La Mode Apparel Group' to 'Golf Apparel Brands, Inc. "GABI"
- 2008 - Purchased Sahara Company, a well known 45 year-old golf brand
- 2011 - Launch of the 'NatureTech Brand' - our current top-seller

Through the years, we have sold almost all fine U.S. Golf Shops and their respective events which have led to an in-house design library of over two hundred thousand digitized logos! Additionally, we have developed thousands of private labels for various accounts including the "Who's who" of prestige shops, tournaments, sporting events, colleges, and major corporations.

I am also proud to say we have some of the most experienced staff in the business with an average tenure of over 20 years. Lupe Sandoval, our embroidery manager has joined me throughout the 37-year journey. I am joined in the business with my amazing wife of 33 years, Wendy. We also welcome into the business, our son E.J., who has recently earned his graduate degree in business from the Univ. of San Francisco.

While the economy and industry have presented some challenges, I am proud that our many years of success have afforded us the resilience to be here for our customers. We continue to strive to be your year-round supplier of core golfwear and quality custom embroidery.

Thank you for choosing Golf Apparel Brands. We are proud to be here for you and appreciate the relationships we have made more than anything.

From our family to yours, we look forward to servicing your needs for many years to come!

Warmest Regards,

**Eddie Kahn**  
Founder & CEO

# ANNIVERSARY

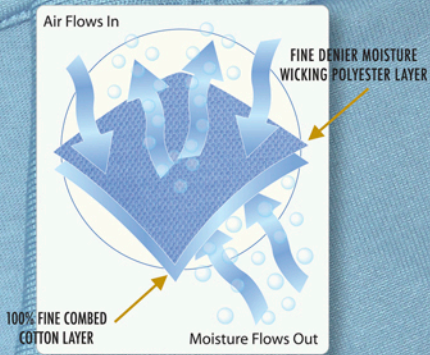


### Table of Contents

NatureTech™ Story.....	3
NatureTech™ Shirts.....	4-13
La mode Polos.....	14-17
Clark & Gregory Shirts.....	18-25
Cashmerlon Sweaters, Cardigans & Vests.....	26-27
Pima Cotton Outer Zips.....	28-29
Pima Cotton Sweaters & Vests.....	30-31
100% Cashmere Sweaters & Vests.....	32
100% Merino Wool Sweaters & Vests.....	33
Windshirts & Windvest.....	34
Fleece.....	35
Rainwear.....	36-37
Navy-Real-Blue-White Group.....	38-39
Black-Stone Group.....	40-41
Navy-Stone-Red Group.....	42-43



## NatureTech™ The #1 Hybrid Sports Fabric Technology



### NatureTech™ Story

Our unique plaited process pairs a natural layer of 100% fine combed cotton for comfort next to your skin with a performance layer of fine denier moisture wicking polyester on the surface of the fabric. The layers work in tandem to cool the body and allow moisture to quickly evaporate. We are confident that once you wear a NatureTech™ garment, you will ask for it by name.

**“ Look Good, Play Well, and Wear  
The Best - NatureTech™! ”**

#### EZ-CARE

- Wash & Wear
- Shrink Resistant
- Wrinkle Resistant
- Stain Resistant
- Color Fast
- Durable, Long Life

#### EZ-WEAR

- Quick Dry
- Cool
- Comfortable
- Retains Shape
- Odor Resistant
- Rich Look and Feel

NatureTech® is an Exclusive Trade Mark of Golf Apparel Brands Inc.

nature  
EZ-Care/EZ-Wear

STYLE: 290

natureTECH™  
EZ-Care/EZ-Wear

STYLE: 280



BLK BRG JAD FOR BUT LAV LTB MAR PST



ORC RBL LIM RED RYL NAV SIL STO WHT

**290 - Men's Open Sleeve Polo, 3-Button Placket and Knit Collar**

Sizes: S M L XL 2XL 3XL 4XL

**natureTECH™**  
EZ-Care/EZ-Wear



BLK BRG BUT FOR JAD LAV LIM LTB MAR NAT



NAV ORC PUR RBL RED RYL PST SIL WHT YEL

**280 - Men's Short Sleeve Jersey Polo, with Raised Ottoman Collar and Cuffs**

Sizes: S M L XL 2XL 3XL 4XL

**natureTECH™**  
EZ-Care/EZ-Wear



BLK BRG CBL FOR MAR NAV



ORG RED RYL PST SIL WHT

**123 - Men's Open Sleeve Jersey Solid Hi-Crew Neck Ribbed Collar.**

Sizes: S M L XL 2XL 3XL 4XL

**natureTECH™**  
EZ-Care/EZ-Wear

nature  
EZ-Care/EZ-Wear

STYLE: 281

nature**TECH**<sup>™</sup>  
EZ-Care/EZ-Wear

STYLE: 280L



**281 - Ladies' Short Sleeve Jersey V-Neck Johnny Collar with Ottoman Detail on Collar, Hemmed Sleeves.**

Sizes: XS S M L XL 2XL



**280L - Ladies' Short Sleeve Jersey Polo, with Raised Ottoman Collar and Cuffs.**

Sizes: XS S M L XL 2XL



**282 - Ladies' Sleeveless Jersey V-Neck Johnny Collar with Ottoman Detail on Collar.**

Sizes: XS S M L XL 2XL



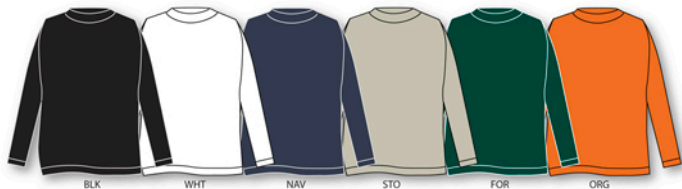
natureTECH™  
EZ-Care/EZ-Wear

STYLE: 119

natureTECH™  
EZ-Care/EZ-Wear

STYLE: 290MLS





BLK

WHT

NAV

STO

FOR

ORG

**119 - Men's Long Sleeve Jersey Mock Neck Collar and Knit Cuffs.**

Sizes: S M L XL 2XL 3XL 4XL



BLK

WHT

NAV

STO

LTB

PNK

LAV

**290MLS - Men's Long Sleeve Jersey Polo 3-Button Knit Collar and Cuffs**

Colors: BLK, WHT, NAV & STO Sizes: S M L XL 2XL 3XL 4XL

**290LLS - Ladies' Long Sleeve Jersey Polo 4-Button Knit Collar and Cuffs**

Colors: BLK, WHT, NAV, LTB, PNK & LAV Sizes: XS S M L XL 2XL



LTB

NAT

YEL

WHT

**264 - Men's - Long-Sleeve Honeycomb Piqué Placket Shirt with Tailored Collar, Pocket and Ribbed-Cuff Sleeves**

Sizes: S M L XL 2XL 3XL



natureTECH™  
EZ-Care/EZ-Wear

STYLE: 263

natureTECH™  
EZ-Care/EZ-Wear

STYLE: 270

natureTECH™  
EZ-Care/EZ-Wear



WHT NAT NAV RED YEL BLK LTB RYL FOR JAD BRG PUR

260 - Men's Open Sleeve Jersey Placket Shirt with Western Yoke, Tailored Collar-2 Front Pockets.

Sizes: S M L XL 2XL 3XL 4XL

natureTECH™  
EZ-Care/EZ-Wear



W/N  
(WHITE-NAVY)

S/B  
(STONE-BLACK)

RB/N  
(REAL BLUE-NAVY)

N/S  
(NAVY-STONE)

B/S  
(BLACK-STONE)

263 - Men's Short Sleeve Jersey Shirt with Contrast Stitching Showing Western Yoke, Tailored Collar and Sleeve Detail.

Sizes: S M L XL 2XL 3XL

natureTECH™  
EZ-Care/EZ-Wear



YEL JAD BRG PUR BLK WHT RYL FOR LTB NAT NAV RED BUT RBL

270 - Men's Open Sleeve Jersey Placket Shirt with Tailored Collar, Left Breast Pocket and Open Sleeves.

Sizes: S M L XL 2XL 3XL 4XL

NatureTech™ Men's Tailored Collar Shirts

natureTECH™  
EZ-Care/EZ-Wear

STYLE: 502

natureTECH™  
EZ-Care/EZ-Wear

STYLE: 305

natureTECH™  
EZ-Care/EZ-Wear

STYLE: 312



W/B (WHITE-BLACK) W/R (WHITE-ROYAL B.) R/B (RED-BLACK) M/W (MAROON-WHITE) W/N (WHITE-NAVY) B/S (BLACK-STONE) S/B (STONE-BLACK) W/R (WHITE-RED) RBN (REAL B.-NAVY) N/R (NAVY-RED)

**502 - Men's Open Sleeve Jersey Raised Ottoman Collar 2-Tone Side Panel.**

Sizes: S M L XL 2XL 3XL 4XL



B/S (BLACK-STONE)

N/L (NAVY-LIME)

O/S (ORANGE-STONE)

RBW (REAL BLUE-WHITE)

**305 - Men's Banded Sleeve Polo Thin Feeder Stripe Solid Trim-Collar Solid Insert on the Shoulder and Sides.**

Sizes: S M L XL 2XL



BL1 (BLACK-TAN-STONE)

NA3 (NAVY-STONE-RED)

RES (RED-STONE-NAVY)

RB4 (REAL BLUE-WHITE-NAVY)

ST6 (STONE-BLACK-TAN)

WH7 (WHITE-REAL BLUE-NAVY)

**312 - Men's Open Sleeve Horizontal Stripe Jersey Polo with Knit Collar.**

Sizes: S M L XL 2XL



LA MODE

100% Combed Cotton ringspun  
30/1 micro piqué. Soft, light,  
breathable, rich in color and  
plenty of colors to choose from.  
A three button placket gives  
this a dressy yet classic look  
The perfect shirt to stay cool  
on a warm day.

That is COOL !





WHT CRM STO NAV RED SYE BLK



RYL LTB TAR GRN MIN LIM AQU



BRG ORC RBL LAV PNK HGR

**1403 - Men's 100% Combed Cotton Micro Piqué 3-Button, Banded Sleeve Polo**

Colors: WHT, CRM, STO, NAV, RED, SYE, BLK, RYL, LTB, TAR, GRN, MIN, LIM, AQU, BRG, ORC, RBL, LAV, PNK & HGR  
 Sizes: S M L XL 2XL 3XL

**1301 - Kid's 100% Combed Cotton Micro Piqué 3-Button Banded Sleeve Polo**

Colors: WHT, NAV, RED, SYE & RBL Sizes: S M L XL



BLK WHT NAV BRG HGR TAR

**1411 - Men's 100% Combed Cotton Micro Piqué 3-Button Long Sleeve Polo.**

Sizes: S M L XL 2XL

LA MODE®  
LADIES FINE





WHT CRM NAV RED CBL BLK MEL ORC AMB COR LAW



GRN LIM BLU AQU LTB RYL LAV RBL SYE STO PNK

**2401 - Ladies' - 100% Combed Cotton Micro Piqué 3-Button Banded Short-Sleeve Polo**

Sizes: SX S M L XL



WHT CRM NAV RED CBL BLK MEL COR



ORC MIN TEA AQU LTB LAV SYE PNK

**2406 - Ladies' - 100% Combed Cotton Micro Piqué 3-Button Banded Sleeveless Polo**

Sizes: SX S M L XL



WHT CRM NAV PNK BLK LIM LAV ORC MEL TAR

**2411 - Ladies' - 100% Combed Cotton Micro Piqué 3-Button Long-Sleeve Polo**

Sizes: XS S M L XL

CLARK & GREGORY

STYLE: CG985

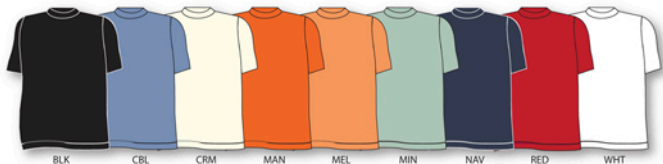
CLARK & GREGORY

Our finest shirts.  
Made from a select  
60/2 extra long  
100% Giza Cotton,  
these yarns are the  
best of the best.

STYLE: CG992

CLARK & GREGORY

STYLE: CG996



BLK CBL CRM MAN MEL MIN NAV RED WHT

**CG985 - Men's 60/2 Double Mercerized Giza Cotton Short-Sleeve Mock Neck Jersey.**

Sizes: S M L XL 2XL



BLK CRM MAN MEL NAV WHT

**CG992 - Men's 60/2 Double Mercerized Giza Cotton Jersey 3-Button Polo with Open sleeves.**

Sizes: S M L XL 2XL



AQU BLK MIN MEL NAV RED TAR WHT

**CG996 - Men's 60/2 Double Mercerized Giza Cotton Piqué 3-Button Polo with Open Sleeves.**

Sizes: S M L XL 2XL

CLARK & GREGORY

STYLE: CGL993T

CLARK & GREGORY

STYLE: CGL998

CLARK & GREGORY

STYLE: CGL997



**CGL993T - Ladies' Double Mercerized Pima Cotton Jersey 1-Button Polo.**

Sizes: XS M L XL 2XL

**CGL904T - Ladies' 100% Double Mercerized Pima Cotton Lisle V-Neck Johnny Collar Short Sleeve Striped Polo Jersey.**

Sizes: S M L XL 2XL



**CGL992 - Ladies' 60/2 Double Mercerized Giza Cotton Jersey 3-Button Polo with Open sleeves**

Sizes: XS M L XL 2XL



**CGL998 - Ladies' 60/2 Double Mercerized Giza Cotton 3-Button Polo Sleeveless Jersey**

Sizes: XS S M L XL 2XL



**CGL997 - Ladies' Double Mercerized Pima Cotton Sleeveless Polo 6-Button Placket.**

Sizes: XS S M L XL 2XL

CLARK GREGORY

STYLE: CG903

CLARK GREGORY

STYLE: CG904

CLARK GREGORY

STYLE: CG926



WHT CRM RBL NAV LIM ORC RED BLK

**CG903 - Men's 60/2 Double Mercerized 100% Giza Cotton Jacquard Diamond with Open Sleeves.**

Sizes: S M L XL 2XL



BLK/WHT GRE/CRM LIM/WHT NAV/OCE NAV/WHT NAV/CRM RED/WHT MEL/BUT

**CG904 - Men's 60/2 Double Mercerized 100% Giza Cotton Thin Feeder Stripe Polo with Birdseye Collar**

Sizes: S M L XL 2XL



OR4  
(ORC/NAV)

RBS  
(RBL/NAV)

WH6  
(WHT/NAV)

LJ2  
(LIM/NAV)

NA3  
(NAV/NAV)

**CG926 - Men's Double Mercerized Giza Cotton Multi-Stripe Shirt**

Sizes: S M L XL 2XL

STYLE: CG910

CLARK GREGORY

CLARK GREGORY

**100% Pima Cotton Interlock**  
Is soft, absorbent, and silky  
to the hand.  
Specially treated to resist  
shrinking, pilling and fading.





BLK

NAV

BRT

TAR

**CG910 - Men's 100% Pima Cotton Interlock Long-Sleeve Polo**

Sizes: S M L XL 2XL



BLK

WHT

NAV

BRT

TAR

CRM

**CG900 - Men's 100% Pima Cotton Interlock Long-Sleeve Mock Neck**

Sizes: S M L XL 2XL

**100% CASHMERLON™**

The look and feel of Cashmere with the easy care, comfort, and performance of CASHMERLON™ pill resistant soft Acrylic yarn. Piece dyed for softer hand feel and natural drape.



RBL RED TAR WHT YEL KGN LIM PNK



BLK BRT COR CRM LAV LAW LTB NAV ORC

**1001 - Men's 100% Cashmerlon™ V-Neck Saddle Shoulder Sweater**

COLORS: BLK, BRT, COR, CRM, LAV, LAW, LTB, NAV, ORC, RBL, RED, TAR, WHT & YEL Sizes: S M L XL 2XL

**2001 - Ladies' 100% Cashmerlon™ V-Neck Saddle Shoulder Sweater**

COLORS: BLK, COR, CRM, KGN, LAV, LIM, LTB, NAV, ORC, PNK, RBL, RED, WHT & YEL Sizes: XS S M L XL 2XL



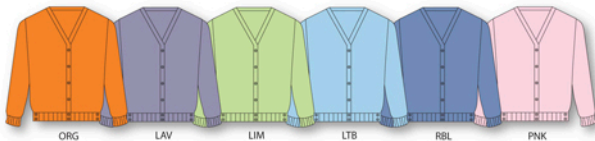
BLK CRM NAV RBL PNK WHT

**1006 - Men's 100% Cashmerlon™ Vest**

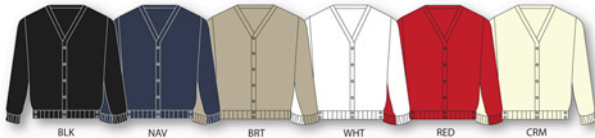
COLORS: BLK, CRM, NAV & RBL Sizes: S M L XL 2XL 3XL

**2006 - Ladies' 100% Cashmerlon™ Vest**

COLORS: BLK, CRM, NAV, RBL, PNK & WHT Sizes: XS S M L XL



ORG LAV LIM LTB RBL PNK



BLK NAV BRT WHT RED CRM

**1002 - Men's 100% Cashmerlon™ V-Neck Cardigan Sweater**

COLORS: BLK, NAV & BRT Sizes: S M L XL 2XL

**2002 - Ladies' 100% Cashmerlon™ V-Neck Cardigan Sweater**

COLORS: BLK, NAV, WHT, RED, CRM, ORC, LAV, LIM, LTB, RBL & PNK Sizes: XS S M L XL 2XL

CLARK GREGORY

STYLE: CG860



BLK



NAV

**STYLE: CG861 - Men's 100% Pima Cotton 1/4 Zip Vest.**

Sizes: S M L XL 2XL 3XL



BLK

NAV

CRM

PNK

PBL

RBL

**CG860 - Men's 100% Pima Cotton Interlock 1/4 Zip Sweatshirt.**

Colors: BLK, NAV, CRM, PNK, & PBL

Sizes: S M L XL 2XL

**CGL860 - Ladies' 100% Pima Cotton Interlock 1/4 Zip Sweatshirt.**

Colors: BLK, NAV, CRM, PNK, & RBL

Sizes: XS S M L XL 2XL



BLK

NAV

CRM

PNK

RBL

**CGL862 - Ladies' 100% Pima Cotton Interlock Full Zipper Cardigan.**

Sizes: XS S M L XL

CLARK GREGORY

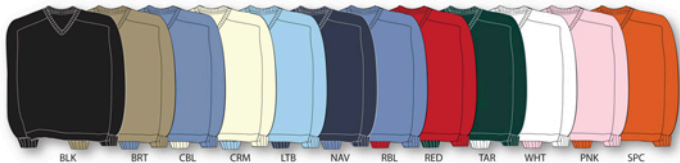
STYLE: CG807

### 100% PIMA COTTON

Pima Cotton is recognized as one of the finest cottons anywhere in the world. We use only hand picked cotton with an extra long staple. These specifications make it possible to spin a very even, clean and silky yarn that produces deep rich colors when dyed. The final product is a sumptuous cotton sweater with fully fashioned detail.

CLARK GREGORY

STYLE: CG810



BLK

BRT

CBL

CRM

LTB

NAV

RBL

RED

TAR

WHT

PNK

SPC

**CG807 - Men's 100% Pima Cotton Full Fashion V-Neck Saddle Shoulder Sweater.**

COLORS: BLK, BRT, CBL, CRM, LTB, NAV, RBL, RED, TAR & WHT Sizes: S M L XL 2XL

**CGL807 - Ladies' 100% Pima Cotton Full Fashion V-Neck Saddle Shoulder Sweater.**

COLORS: BLK, CRM, LTB, NAV, PNK, RBL, RED, SPC & WHT Sizes: XS S M L XL 2XL



BLK

BRT

CRM

NAV

CBL

RED

SPC

TAR

WHT

**CG806 - Men's 100% Pima Cotton Full Fashion V-Neck Vest.**

Sizes: S M L XL 2XL



BLK

BRT

CBL

CRM

NAV

**CG805 - Men's 100% Pima Cotton Full Fashion Crewneck Saddle Shoulder Sweater.**

Sizes: S M L XL 2XL



BUT

CBL

CRM

LTB

WHT

NAV

PNK

**CG810 - Men's 100% Pima Cotton All-Over Cable V-Neck Vest.**

COLORS: BUT, CBL, CRM, LTB, & WHT Sizes: S M L XL 2XL 3XL

**CGL810 - Ladies' 100% Pima Cotton All-Over Cable V-Neck Vest.**

COLORS: CRM, LTB, NAV, PNK, & WHT Sizes: S M L XL 2XL



BLK

CRM

NAV

**CG814V - Men's 100% Pima Cotton Diamond Jacquard Vest.**

Sizes: S M L XL 2XL

CLARK &amp; GREGORY

## 100% CASHMERE

Cashmere is one of the most rare and precious fibers in the world. Its lightness, its warmth and its caressing touch make cashmere one of life's ultimate pleasures.



HBG

NAV

BLK

STYLE: CG777 - Men's 100% Cashmere V-Neck Sweater.

Sizes: S M L XL 2XL



HBG

NAV

BLK

STYLE: CG700 - Men's 100% Cashmere V-Neck Vest.

Sizes: S M L XL 2XL



CLARK GREGORY

**100% MERINO WOOL**

Merino is one of the softest types of Wool available, due to finer fibers and smaller scales. Is excellent at regulating body temperature, provides some warmth, without overheating the wearer.

Merino Wool yarns give these sweaters luxurious softness and a supremely lightweight quality.



NAV PBL TAR BLK BRG NAT

CG600 - Men's 100% Merino Wool V-Neck Vest. Sizes: S M L XL 2XL



BLK NAV PBL CRM

CG609 - Men's 100% Merino Polo Sweater. Sizes: S M L XL 2XL



NAV PBL BLK BRG BRT NAT

CG610 - Men's 100% Merino Wool V-Neck Sweater. Sizes: S M L XL 2XL

Clark & Gregory 100% Merino Wool Men's Sweaters & Vests



STYLE: JK1729

LA MODE®  
ACTIVE SPORTSWEAR  
LOS ANGELES



BLACK-TAN  
(B/T)

NAVY-TAN  
(N/T)

TAN-NAVY  
(T/N)

JK1729 - Men's 1/2 Sleeve V-Neck Windshirt with Stripe Trim.

Sizes: S M L XL 2XL

LA MODE®  
ACTIVE SPORTSWEAR  
LOS ANGELES



BLACK-TAN  
(B/T)

NAVY-TAN  
(N/T)

TAN-NAVY  
(T/N)

FOREST-TAN  
(F/T)

JK1730 - Men's V-Neck Windvest with Stripe Trim.

Sizes: S M L XL 2XL 3XL 4XL

STYLE: JK1730

La Mode Windvest & 1/2 Sleeve Windshirt

STYLE: 1240



BLK BRT NAV RBL TAR PNK

1240 - Men's 100% Polyester 1/4 Zip Performance Fleece.  
COLORS: BLK, BRT, NAV, RBL, TAR Sizes: S M L XL 2XL 3XL

2240 - Ladies' 100% Polyester 1/4 Zip Performance Fleece.  
COLORS: BLK, BRT, NAV, RBL & PNK Sizes: S M L XL

Men's & Ladies' 1/4 Zip Heavy Performance Fleece

CLARK & GREGORY



BRITISH TAN-BLACK  
(BTB)



RED-NAVY  
(R/N)



TARTAN-BRITISH TAN  
(TBT)

CG850 - Men's Polyester 1/4 Zip Performance Fleece  
with Striped Collar and Cuffs

Sizes: S M L XL 2XL

STYLE: CG850



CLARK GREGORY



B/S

N/S

S/N

RBN

T/S

**CG460 - Men's 100% Polyester Jacket with Polyurethane Waterproof Coating.**

COLORS: B/S, N/S, S/N, RBN & T/S Sizes: S M L XL 2XL 3XL

**CGL460 - Ladies' 100% Polyester Jacket with Polyurethane Waterproof Coating.**

COLORS: B/S, N/S & S/N Sizes: XS S M L XL

**100% Polyester with Polyurethane Waterproof Coating.**



B/S

N/S

S/B

T/S

**CG451 - 1/2 Sleeve Rain Shirt.**

Sizes: S M L XL 2XL



BLK

NAV

STO

**JK1703 - Men's Jacket with Hidden Hood**

COLORS: BLK, NAV & STO Sizes: S M L XL 2XL

**JK2703 - Ladies' Jacket with Hidden Hood**

COLORS: BLK & NAV Sizes: S M L XL 2XL

**JK1705 - Men's THINSULATE® Jacket with Hidden Hood**

COLORS: BLK & NAV Sizes: S M L XL 2XL



B/S

S/B

N/S

RBN

S/N

**CG450 - Men's 100% Polyester with Polyurethane Waterproof Coating, Polyester Lining Rain Jacket.**

COLOR: B/S, S/B, N/S & RBN Sizes: S M L XL 2XL 3XL

**CGL450 - Ladies' 100% Polyester with Polyurethane Waterproof Coating, Polyester Lining Rain Jacket.**

COLOR: S/N Sizes: XS S M L XL



BLK

**CGP453 - Men's 100% Nylon with Polyurethane Waterproof Coating, Polyester Lining, Adjustable Waist, Reach-through Pockets, Zippered Pocket and Legs.**

COLORS: BLK & NAV Sizes: S M L XL 2XL

**CGLP453 - Ladies' 100% Nylon with Polyurethane Waterproof Coating, Polyester Lining, Adjustable Waist, Reach-through Pockets, Zippered Pocket and Legs.**

COLORS: NAV Sizes: S M L XL



NAV



BLK

STO

NAV

**RH1504 100% Nylon with Polyurethane Coating, Polyester Lining Waterproof Rain Bucket**

# NAVY-REAL BLUE-WHITE GROUP





NAVY REAL BLUE WHITE GROUP

# BLACK STONE GROUP







**BLACK STONE GROUP**

# NAVY STONE RED GROUP





**NAVY STONE RED GROUP**



**GOLF APPAREL BRANDS INC.**

235 W. 140th Street Los Angeles, CA 90061

Phone: (310) 327-5188 or (310) 715-7470 Fax: (310) 715-7474

[www.lamode.com](http://www.lamode.com)